

GUIDA D'INSTALLAZIONE AMBIENTE LATEX

DOCUMENT INFO

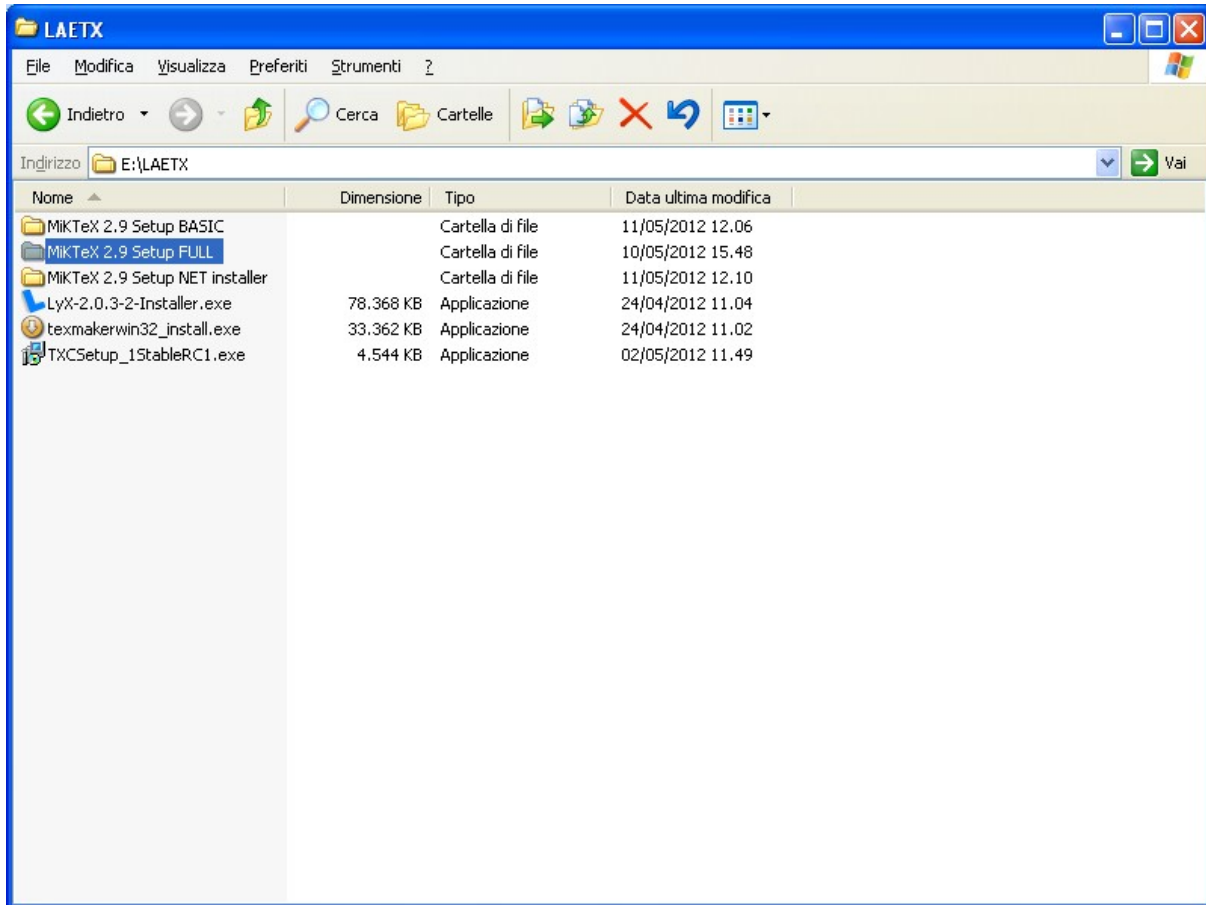
Title	Installazione Ambiente LATEX		
Code			
Date of issue	26/03/2012	Version	2.0

CHANGE VERSION HISTORY

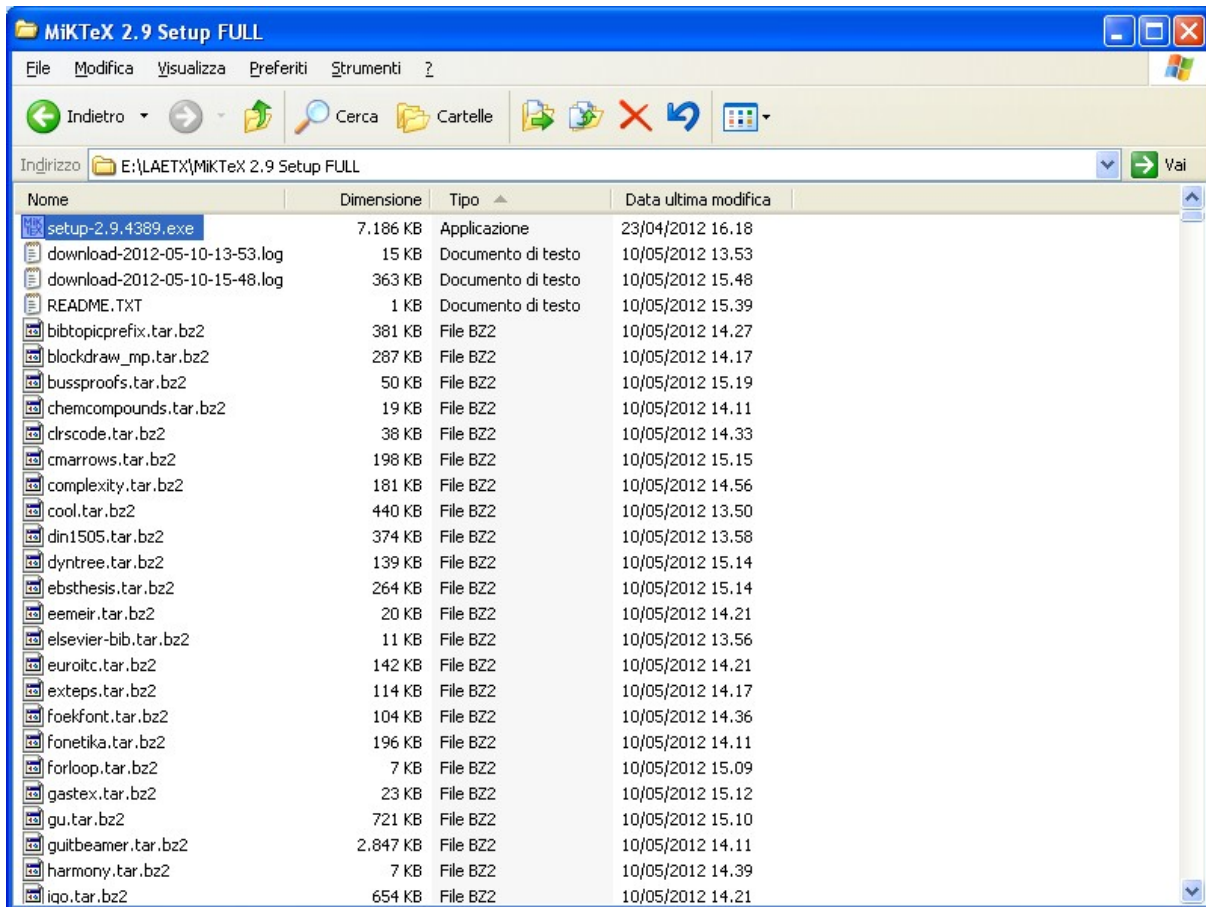
<i>Version</i>	<i>Date</i>	<i>Change Description</i>
1.0	26/03/2012	First issue
2.0	14/01/2012	Aggiornamento versione Lyx 2.0.5
3.0	15/05/2013	Aggiornamento versione Lyx 2.0.6

1. FASE: 1 Installazione LATEX engine

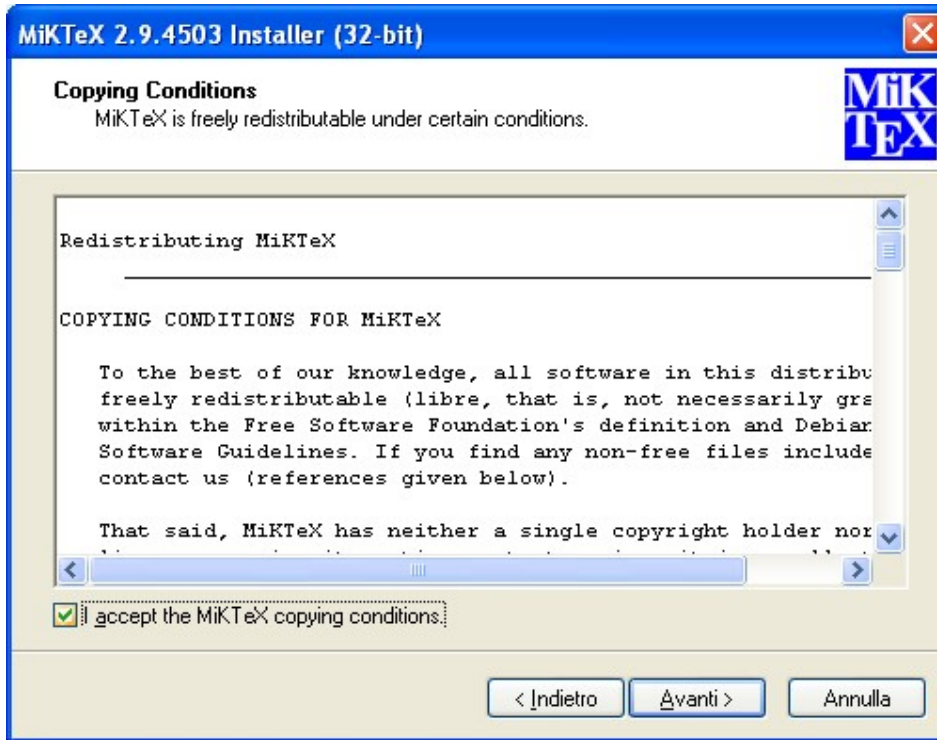
Selezionare il pacchetto d'installazione Full / Basic



Lanciare il setup (la figura mostra il setup nel caso si scelga il pacchetto full)

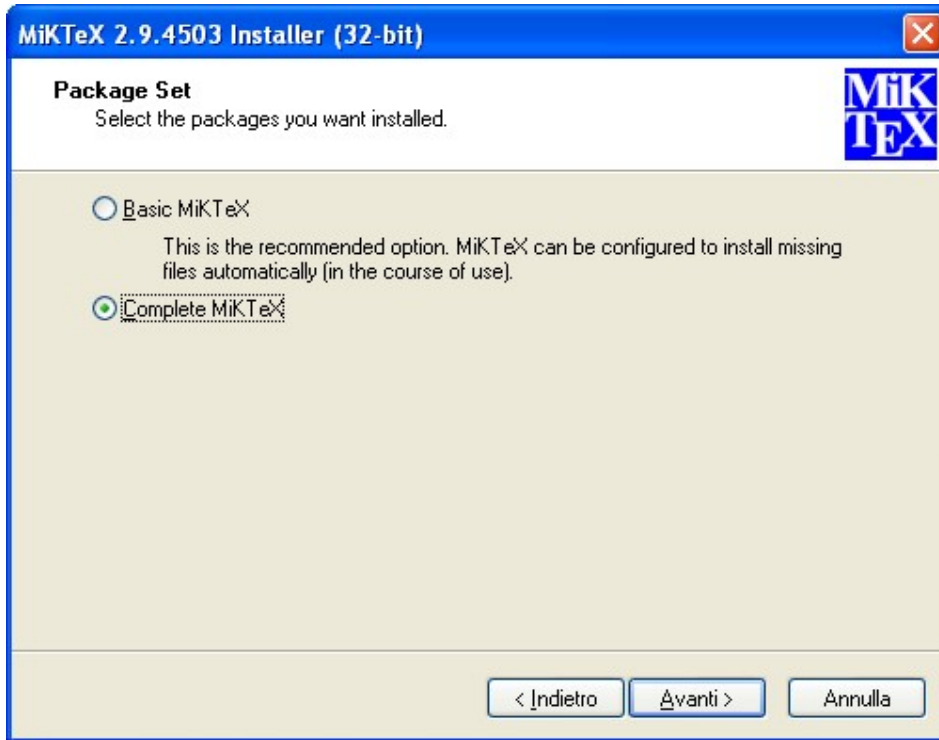


Accettare le condizioni d'uso



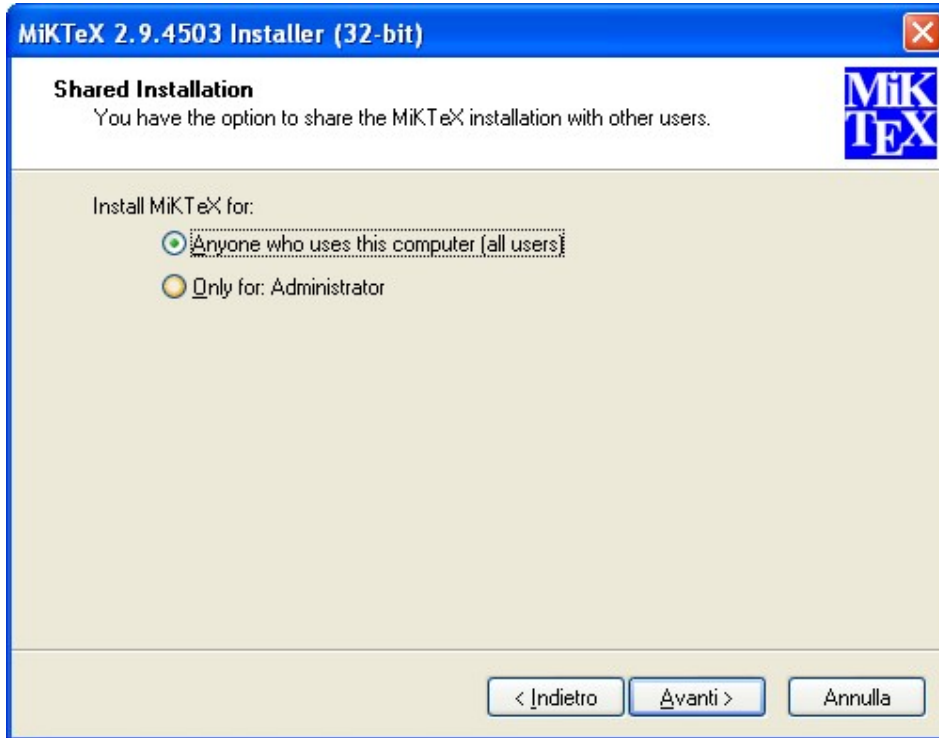
Scegliere "Avanti"

Selezionare l'opzione "CompleteMikTeX"



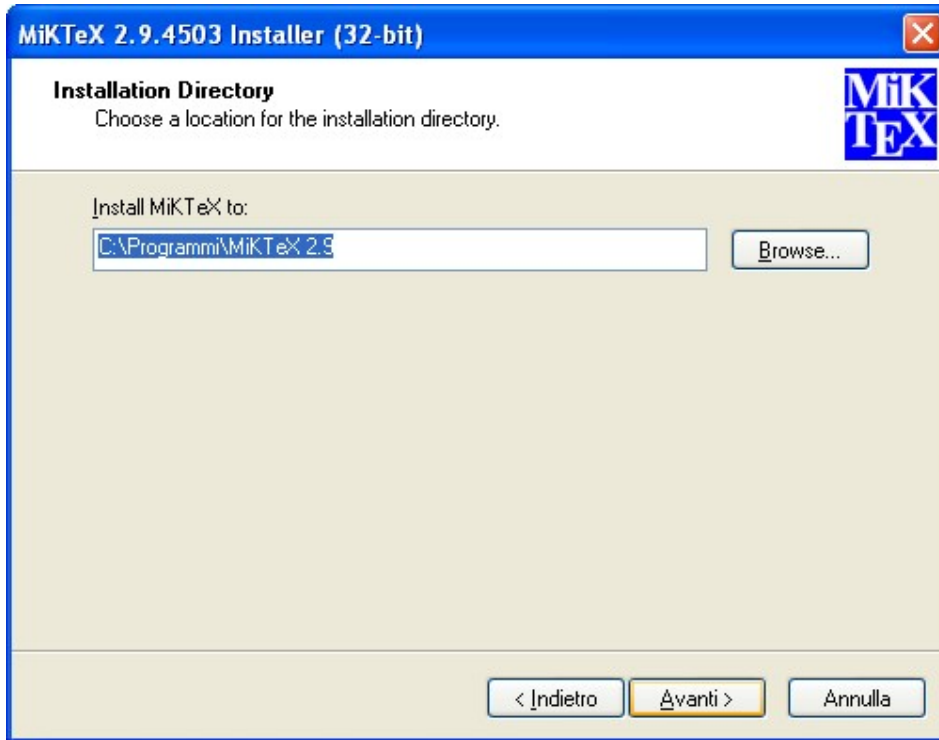
Scegliere "Avanti"

Selezionare gli utenti che possono utilizzare l'applicazione (Anyone)



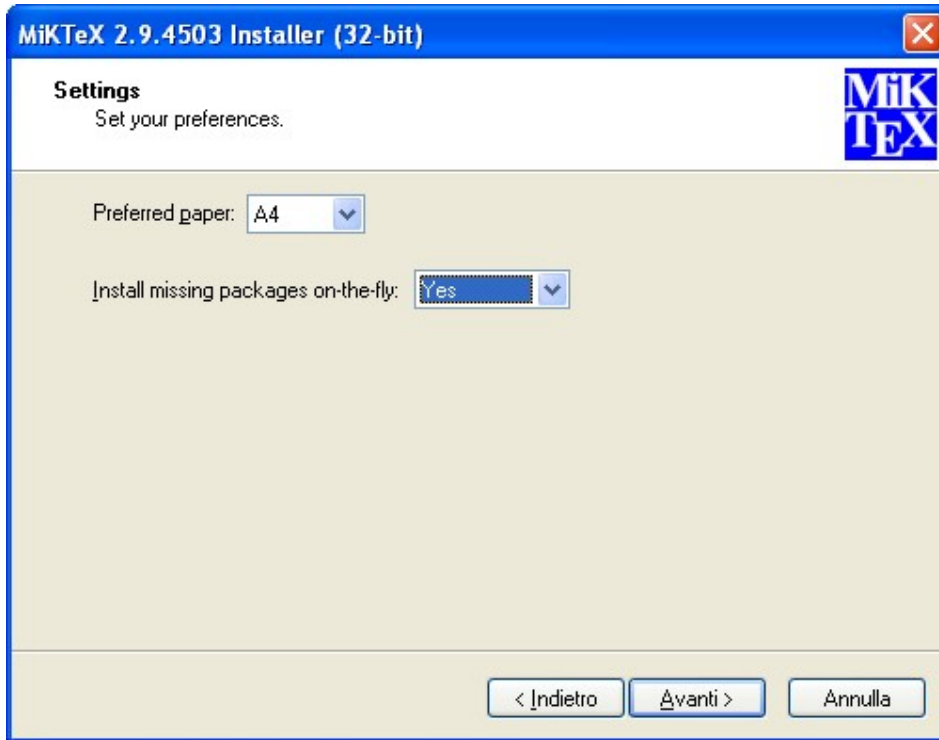
Scegliere "Avanti"

Selezionare il folder d'installazione (lasciare lo standard)



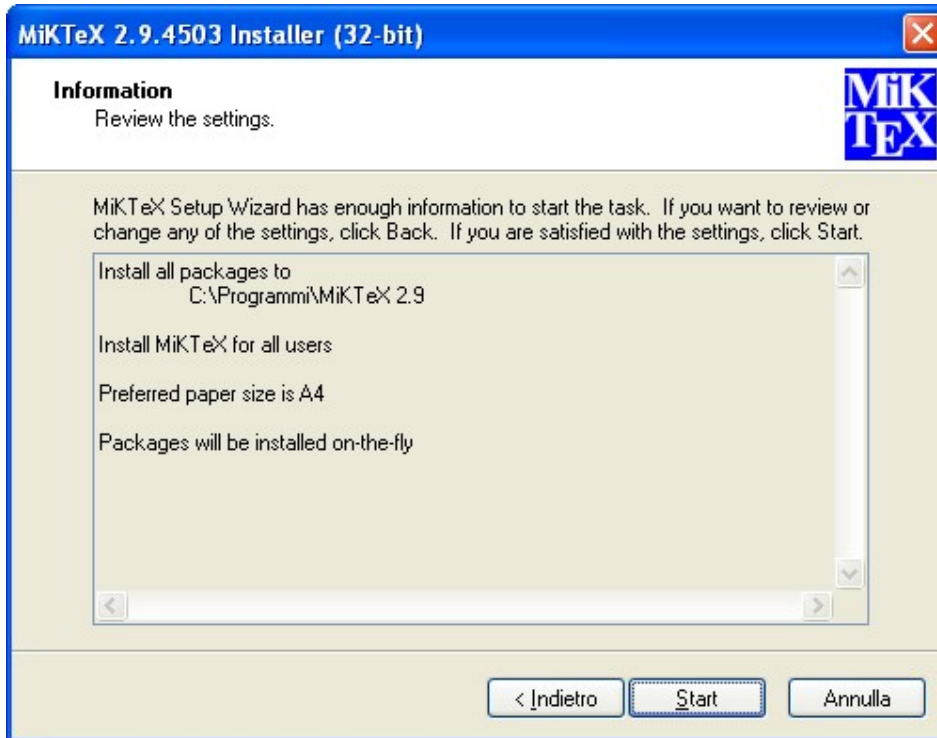
Scegliere "Avanti"

Impostare le seguenti opzioni d'installazione del programma



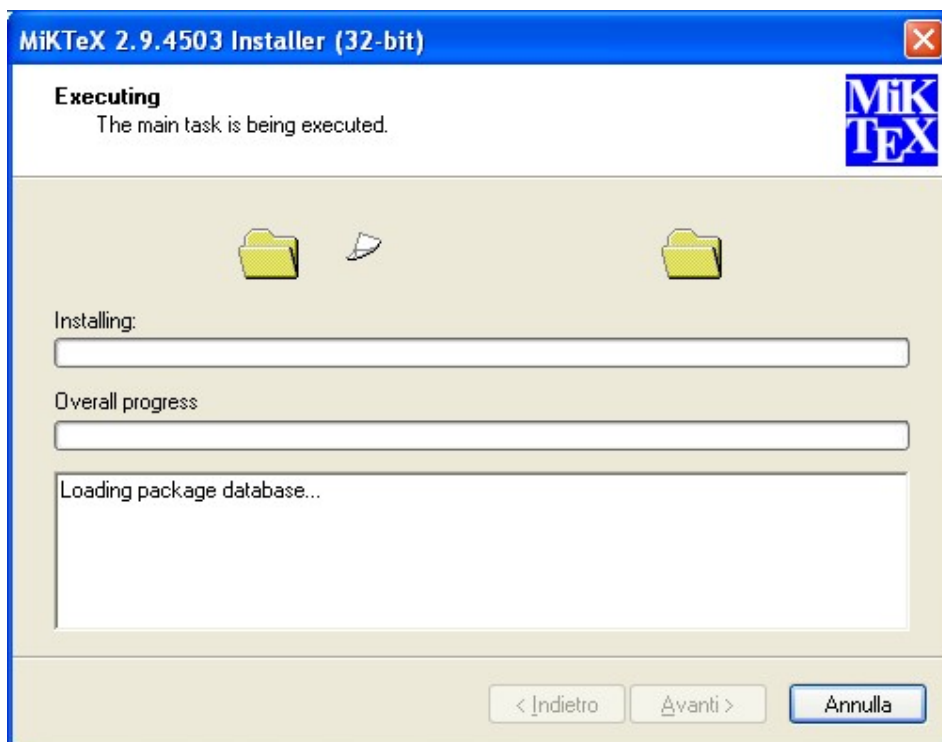
Scegliere “Avanti”

Confermare le impostazioni d'installazione



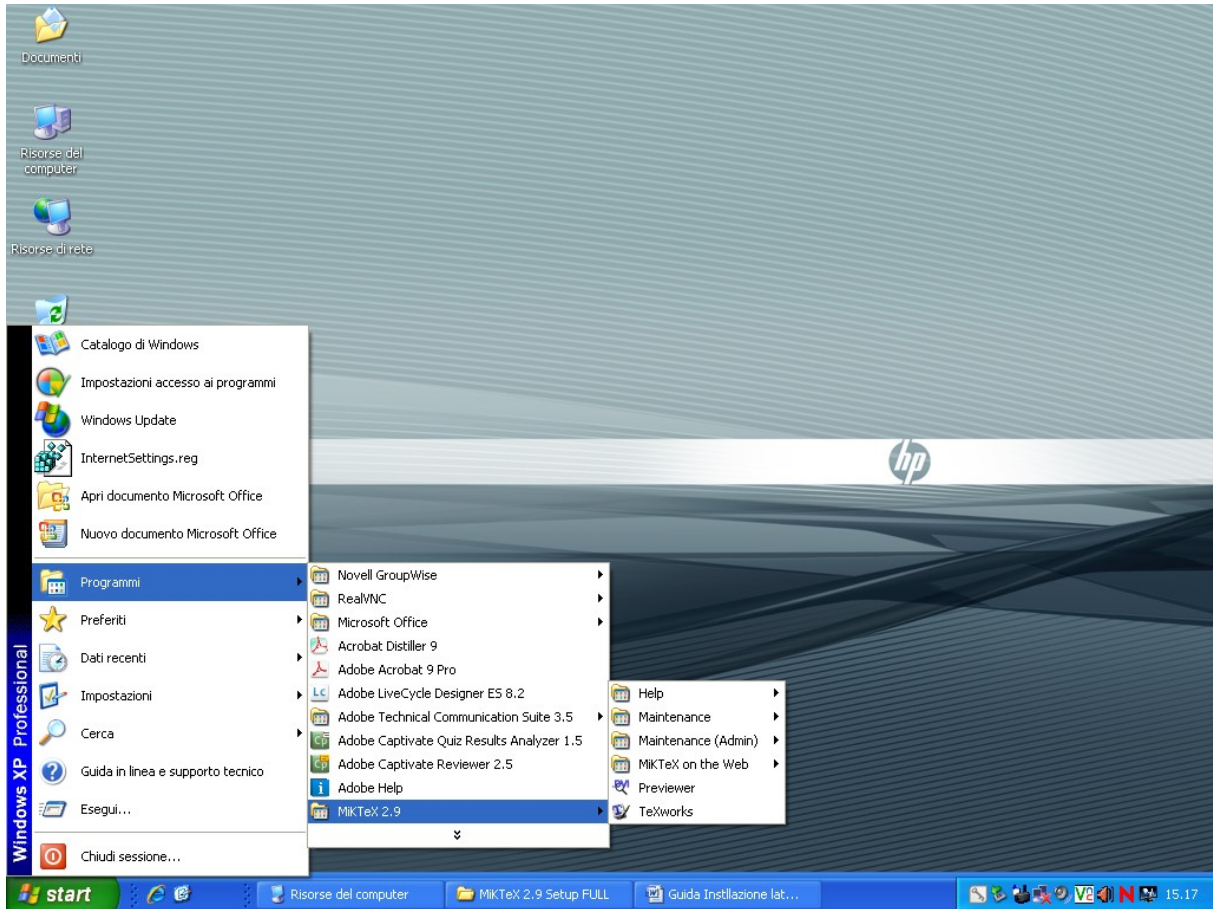
Scegliere "Start"

Il Setup viene avviato



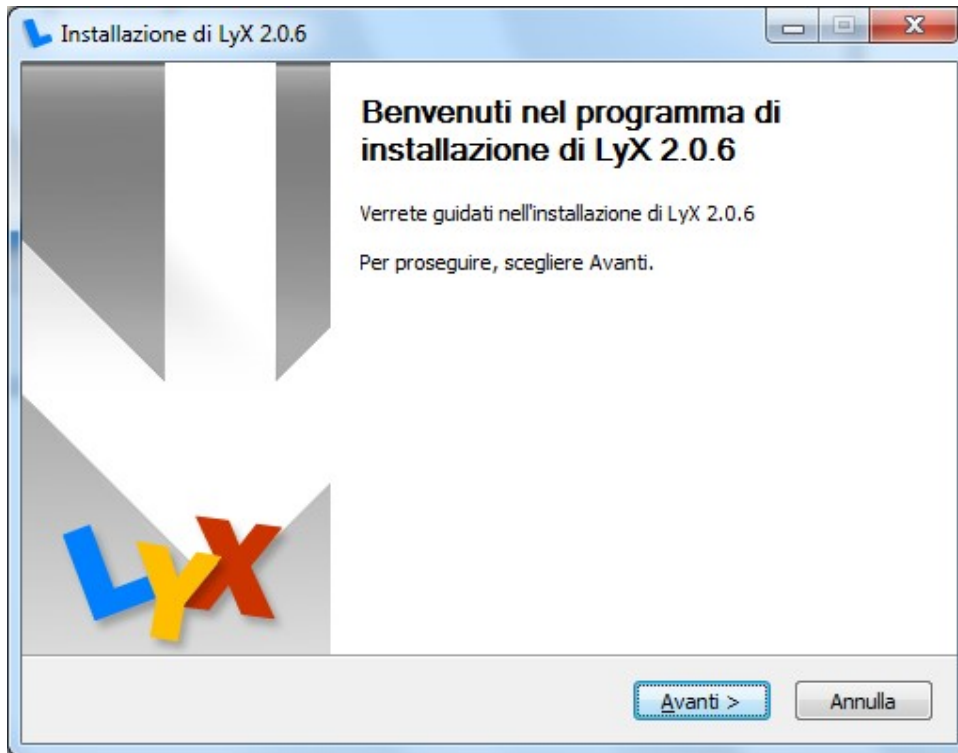
Attendere la fine dell'installazione.

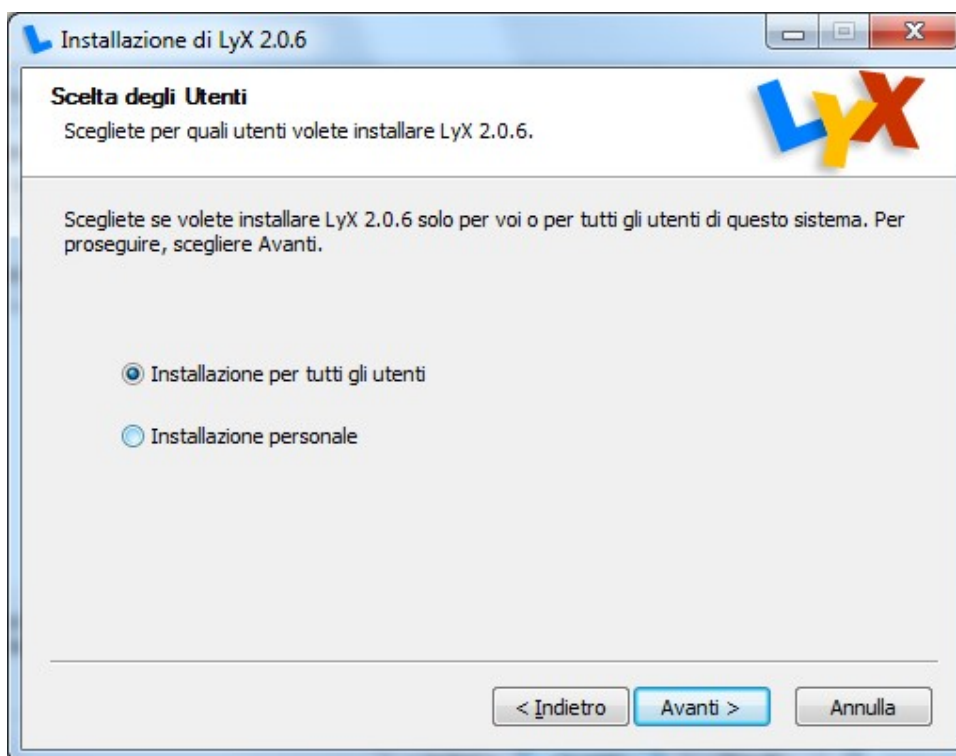
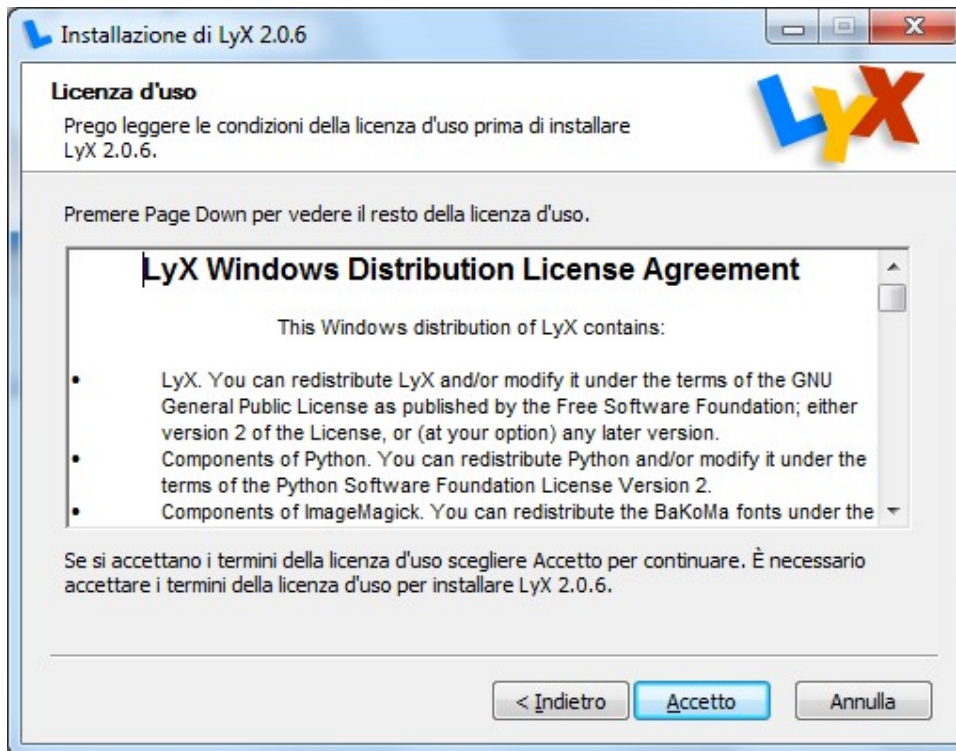
Conferma installazione

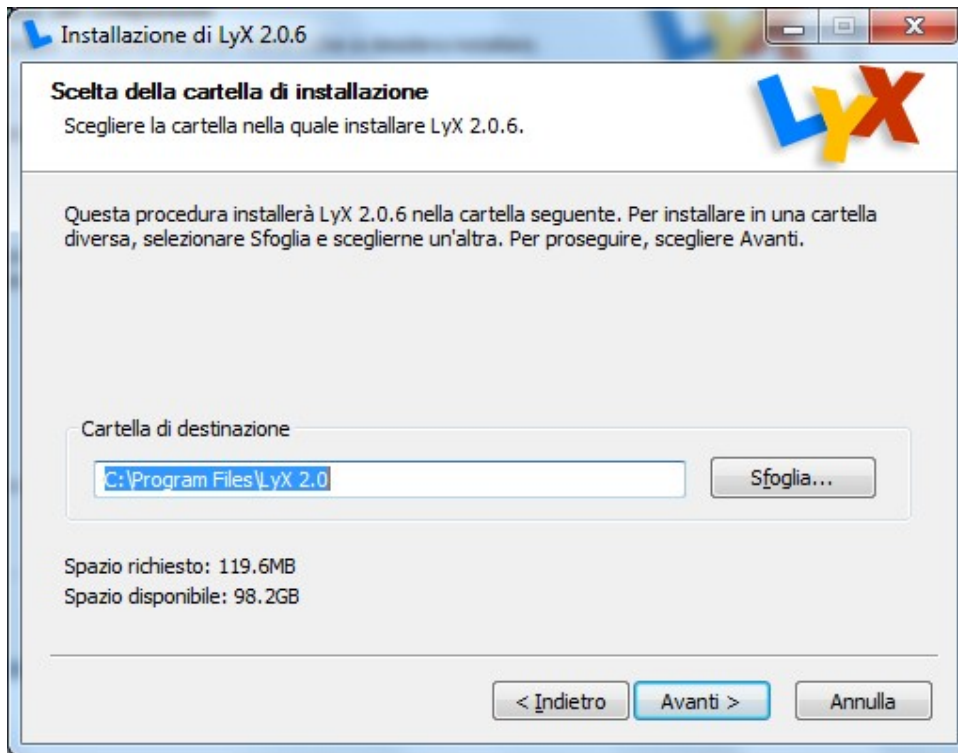


2. FASE 2: Installazione Lyx 2.0.5.1

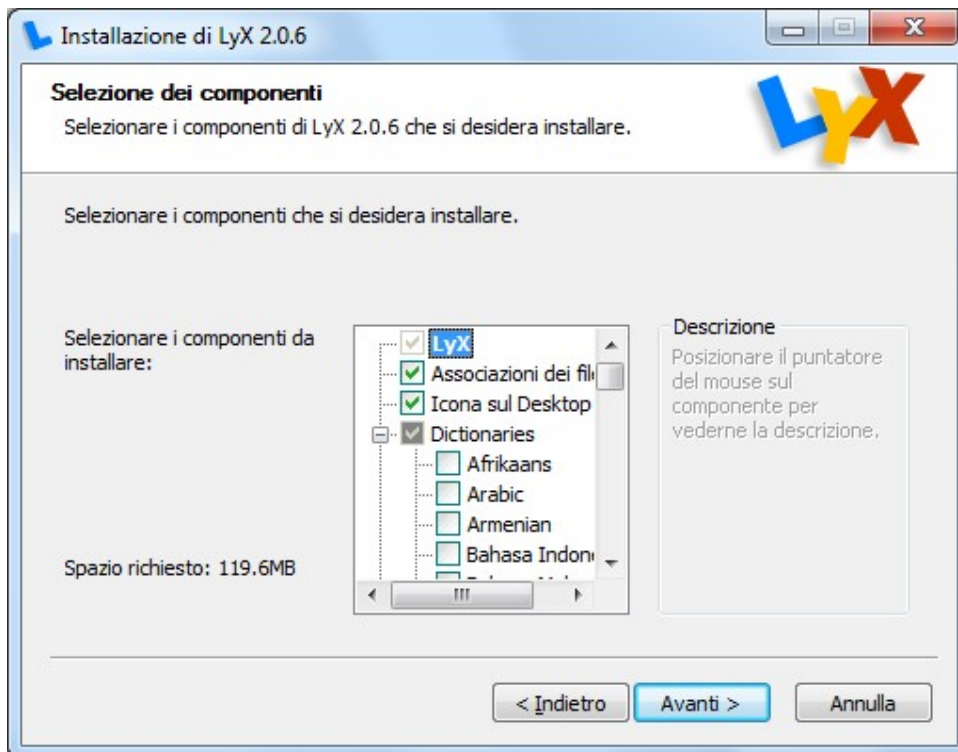
Selezionare il pacchetto d'installazione e lanciarlo LyX-2.0.5.1-Installer-1.exe

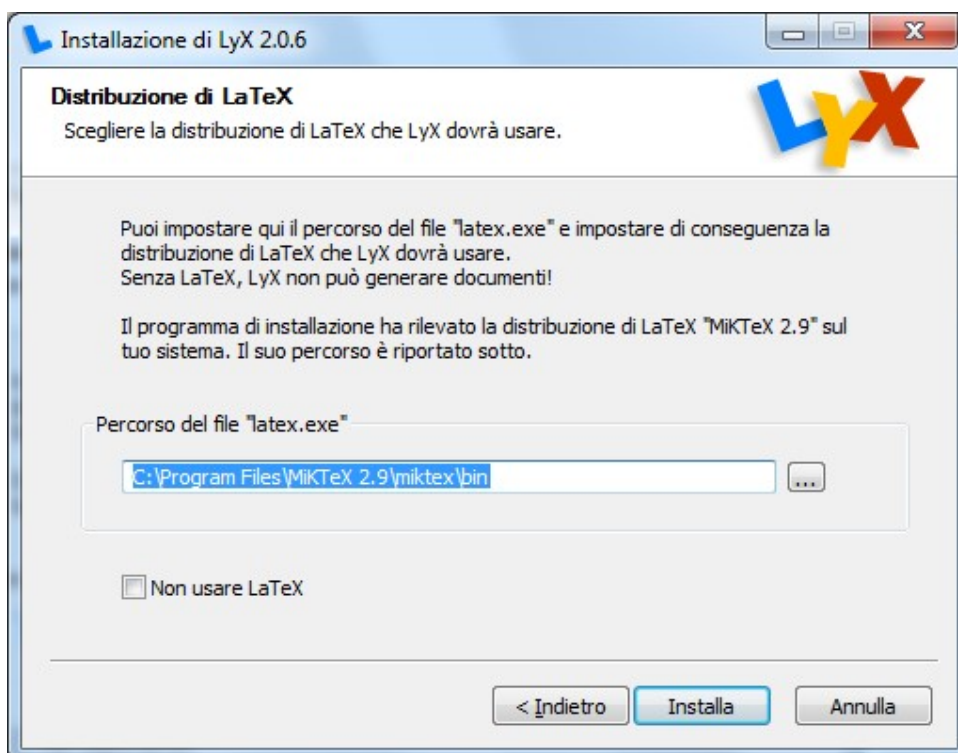
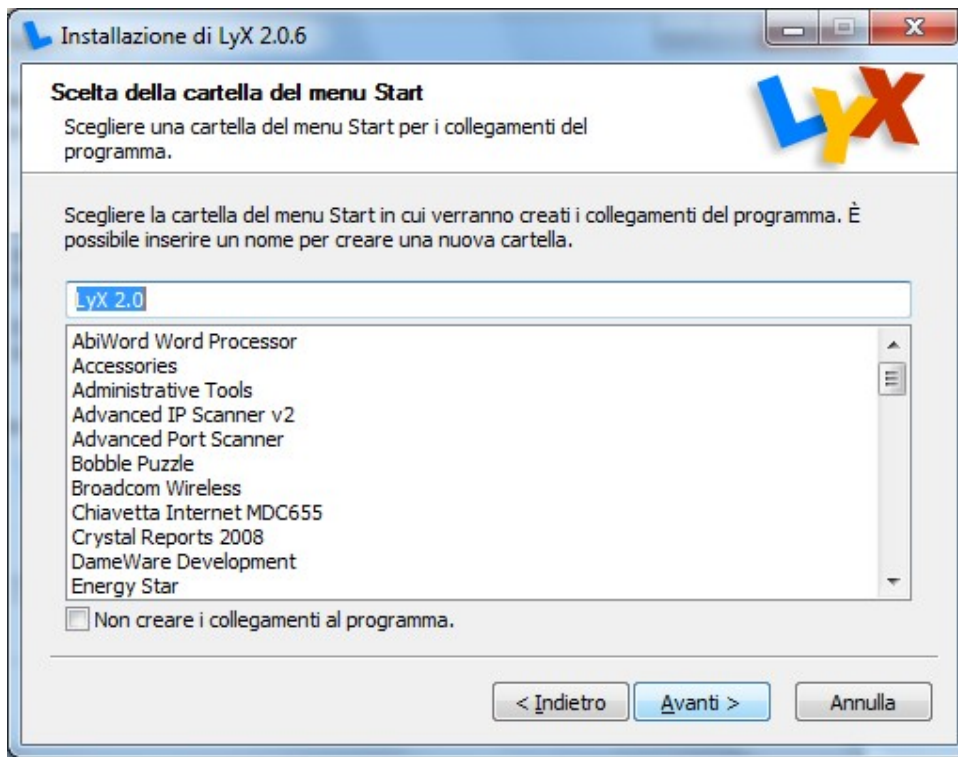


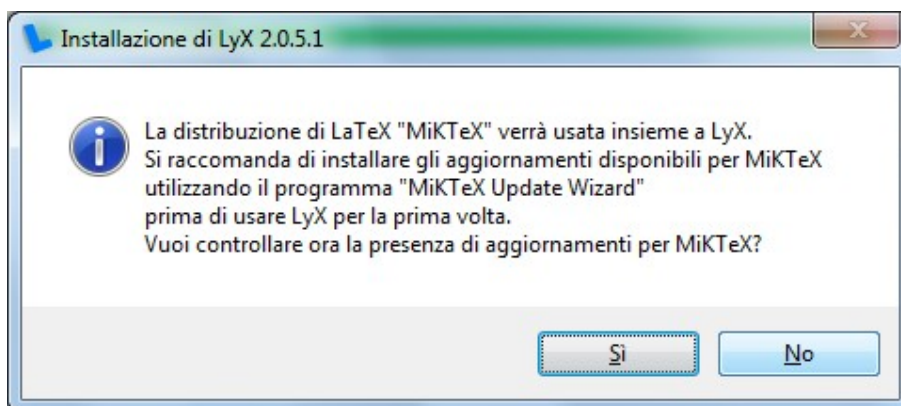
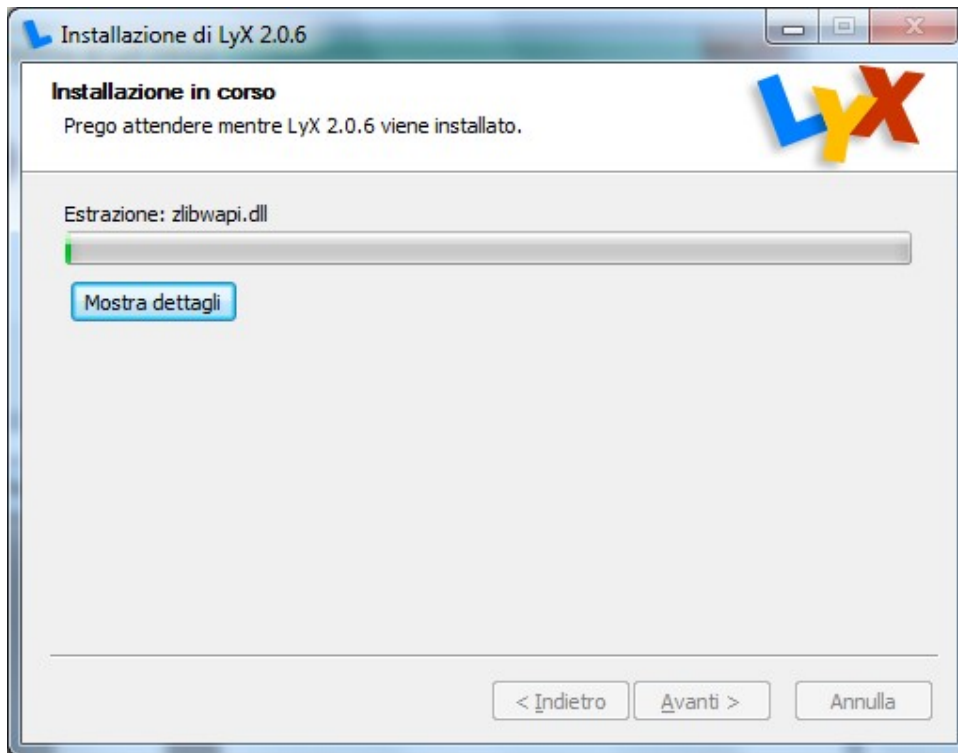




Mantenere le opzioni di default







Rispondere No.

